



WORLD'S BEST
ALLOY BULLBARS

East Coast Bullbars (ECB Pty Ltd)

Tel: 07 3897 5700

Fax: 07 3283 1168

ecb@ecb.com.au www.ecb.com.au

29 Snook St
Clontarf QLD 4019
Australia

Po Box 122
Margate QLD 4019
Australia

BT30SY

REPLACES: 29.06.10
REVISED: 09.11.10

FITTING INSTRUCTIONS

TOYOTA KLUGER 08/07-09/10 BIG TUBE™ BAR WITH FOG LAMPS VEHICLE FRONTAL PROTECTION SYSTEM (VFPS) FOR AIR BAG AND ADR COMPLIANT VEHICLES

Check installation hardware before commencing.

1. Lift Bonnet
2. Remove grille fill panel from between headlamps and radiator support. (Eleven Plastic push pull clips)
3. Remove grille. Four plastic push pull clips and two 10mm head bolts. Pull forward and slide hand to bottom of grille. Working from the side, unclip by releasing centre of clip from bumper. **See Figure 1.**
4. Remove bumper cover. One 8mm head screw and one plastic clip (per side), six 10mm head screws from under front of vehicle to splash guards and 1 plastic clip from under grille. Gently push bumper cover rearward to release from clip where 8mm screw previously removed, pull top of bar away from guard of vehicle to unclip from guard retaining clip.
5. Remove polystyrene bumper support.
6. Remove six 14mm bolts from inside of alloy intrusion bar. Remove intrusion bar.
7. Remove two 10mm head bolts and two push pull plastic clips from centre splash guard. Allow to hang.
8. Attach external steel mount (supplied) to outside of inner steel mount as it would sit on vehicle. Fit 4mm steel mounting section (supplied) over rear of alloy intrusion bar. Measure inside to inside of 8mm alloy mounts on ECB protection bar and align steel mounts evenly on intrusion bar using measurement to outside of external steel mount. **See Figure 2.**
9. Mark and drill centre hole on rear and underside of mount. Exterior holes will align with standard holes for chassis mounting. Fit 3/8 x 1 ¼ Bolt and washer on wire, washer, spring washer and nut (supplied) through rear hole on mount and 3/8 nut and washer on wire, flat washer, spring washer and 3/8 bolt (supplied) to lower hole. **FINGER TIGHTEN ONLY.**
10. Refit alloy intrusion bar to vehicle using original bolts. Centre bar and **TIGHTEN ALL BOLTS. See figure 3.** Using mount as a guide drill two 10mm holes into radiator support. **CAUTION: RADIATOR IS DIRECTLY ABOVE DRILL POINTS. DO NOT PUNCTURE. Treat drilled holes with paint or rust proofing.** Fit using 3/8 nut and washer on wire, flat washers, spring washers and 3/8 x 1 ¼ bolts (supplied). **TIGHTEN ALL BOLTS.** Cut excess wire from bolts and nuts and crimp to panelling to avoid rattling.
11. Test fit external steel mount to outside of mount on vehicle to ensure external measurement of steel mounts match internal measurement of Alloy protection bar. Remove external steel mount.
12. With masking tape, protect paintwork on vent fins on outer vents of plastic bar. Fit plastic bar to vehicle in correct position and mark top section of vent to be trimmed. Remove from vehicle. Allow room to inside of mount for adjustment and 10mm to outside of mount for external steel mount. Trim bumper cover. **See figure 4.**



**WORLD'S BEST
ALLOY BULLBARS**

East Coast Bullbars (ECB Pty Ltd)

Tel: 07 3897 5700

Fax: 07 3283 1168

ecb@ecb.com.au www.ecb.com.au

29 Snook St
Clontarf QLD 4019
Australia

Po Box 122
Margate QLD 4019
Australia

13. Remove original fog lights from bumper (two pk screws per light). Leave with customer for possible refit at latter date should protection bar be removed.
14. Splice ECB indicator / park light wiring into original wiring loome. Loome is easily accessible under headlamp assembly.
15. Connect ECB fog light wiring to original fog light wiring. Use wiring kit supplied with fog lights and cable locks (supplied). For vehicles without original fog lights it will be necessary to wire lights into vehicle via a relay (not supplied).
16. Remove masking tape and refit original equipment as per reverse of steps 2 to 5. Feed ECB wiring thru hole left by original equipment fog light. Check all wiring is tradesman like and will not rub through on any metal.
17. Fit external steel mount using two 3/8 x 1 1/2 bolts, flat washers, spring washers and nuts (supplied) in top holes and 3/8 x 1 1/2 bolts, flat washers, spring washers and nyloc nuts (supplied) to bottom holes (bolt from bottom with spring washer and flat washer, flat washer and nyloc nut to top for best attachment). Check mounts are parallel and **TIGHTEN ALL BOLTS. See figure 5.**
18. Fit ECB LED indicator / park lights (supplied) into protection bar as per instructions supplied with the LED indicator kit. **NOTE: Ensure park light is to outside. See figure 6.**
19. Attach ECB fog lights to protection bar. Place M6 x 20 bolts, spring washers (supplied) through light mount from inside and attach nut to top. Slide assembly into light mount in Protection bar and centralize light to hole.) **TIGHTEN FIRM ONLY. See figure 7.** Attach ECB plastic fog light trims to protection bar with deflector toward centre.
20. Attach ECB 6mm clip lock trim (supplied) to rear of protection bar. **NOTE:** Trim off lower edge on an angle so trim will sit flush with end of protection bar. **See figures 8, 9 and 10.** Attach 3mm clip lock trim (supplied) to tow hook cut outs in skirt. **See figure 11.**
21. Remove external skirt vents from bar before fitment to allow access to bolts. Attach ECB protection bar to outside of steel mounting system. Use 1/2 x 1 1/2 bolts, nuts, flat washers and spring washers (supplied). **FINGER TIGHTEN ONLY.**
22. Align protection bar with vehicle. **TIGHTEN ALL BOLTS AND NUTS. See figure 12 and 13** for side and front view.
23. Connect ECB indicator / park lights and **CHECK OPERATION.**
24. Connect ECB fog lights and **CHECK OPERATION.**
25. Aim ECB fog lights with low beam. **TIGHTEN IN POSITION.**
26. Refit skirt vents to bar.

ENSURE NUMBER PLATE IS CLEARLY VISABLE

Note: When fitting/refitting the licence plate to the vehicle, ensure there is no obstruction to licence plate vision in accordance with local authorities. If required relocate licence plate to an alternate location.



East Coast Bullbars (ECB Pty Ltd)

Tel: 07 3897 5700

Fax: 07 3283 1168

ecb@ecb.com.au www.ecb.com.au

29 Snook St
Clontarf QLD 4019
Australia

Po Box 122
Margate QLD 4019
Australia

**WORLD'S BEST
ALLOY BULLBARS**

Further VFPS Notes:

- a) Do not attach VFPS to the vehicle using anchorages not intended for this purpose (e.g. engine mounting bolts).
- b) Do not use this product for any vehicle make or model, other than those specified by the VFPS manufacturer.
- c) Do not remove the plaque or label from the VFPS.
- d) Do not modify the structure of the VFPS in any way.
- e) No accessory or fitment should project forward of the VFPS forward profile.
- f) **ENSURE THESE INSTRUCTIONS ARE LEFT WITH VEHICLE OWNER AND/OR OPERATOR.**

IMPORTANT INFORMATION

Periodically check bolts and nuts for correct tightness, especially if travelling on rough roads

FITTING KIT

1 – Pair internal steel mounts.	12 – ½ flat washers
1 – Pair external steel mounts.	6 – ½ spring washers
10 – 3/8 x 1 ½ bolts.	1 – ECB LED Indicator / Park light kit
4 – 3/8 x 1 ¼ bolts.	1 – Fog light kit
2 – 3/8 x 1 ½ bolts, washers on 300mm wire.	2 – Fog light trims
6 – 3/8 nuts and washers on 300mm wire	2 – M6 x 20 bolts.
6 – 3/8 nuts.	2 – M6 nuts
4 – 3/8 nyloc nuts.	2 – M6 flat washers.
24 – 3/8 flat washers.	2 – M6 spring washers
16 – 3/8 spring washers.	10 – Cable locks
6 – ½ x 1 ½ bolts.	1 – 2500mm length 6mm clip lock
6 – ½ nuts.	2 – 300mm length 3mm clip lock

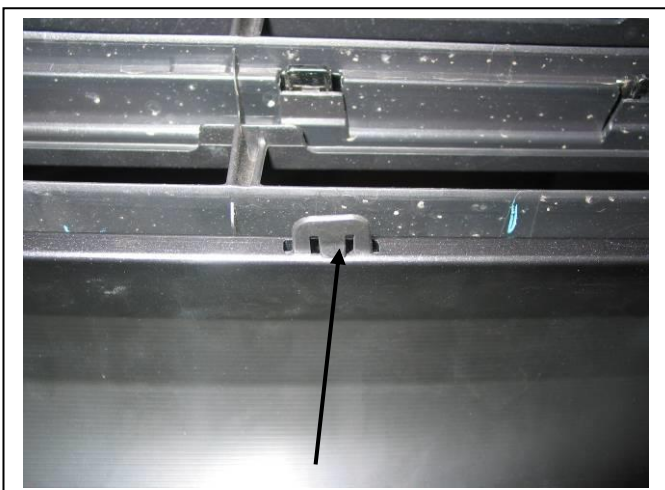


Figure 1: Lower view of grille clip. Push centre up

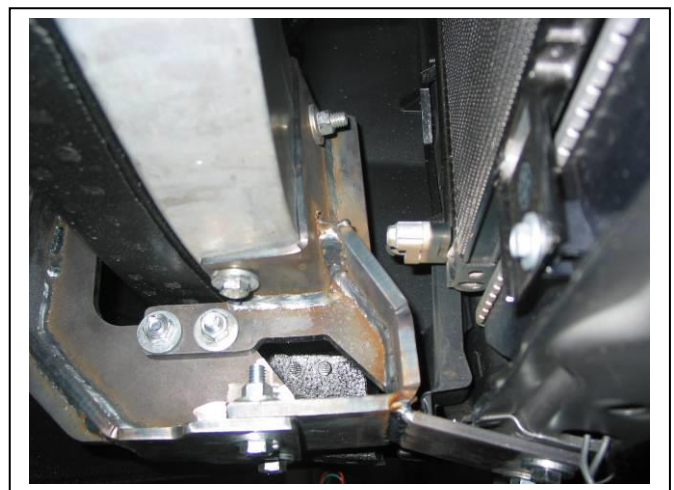


Figure 2: Internal steel mount attached to Alloy intrusion bar as fitted to test vehicle.



East Coast Bullbars (ECB Pty Ltd)

Tel: 07 3897 5700

Fax: 07 3283 1168

ecb@ecb.com.au www.ecb.com.au

29 Snook St
Clontarf QLD 4019
Australia

Po Box 122
Margate QLD 4019
Australia

WORLD'S BEST
ALLOY BULLBARS



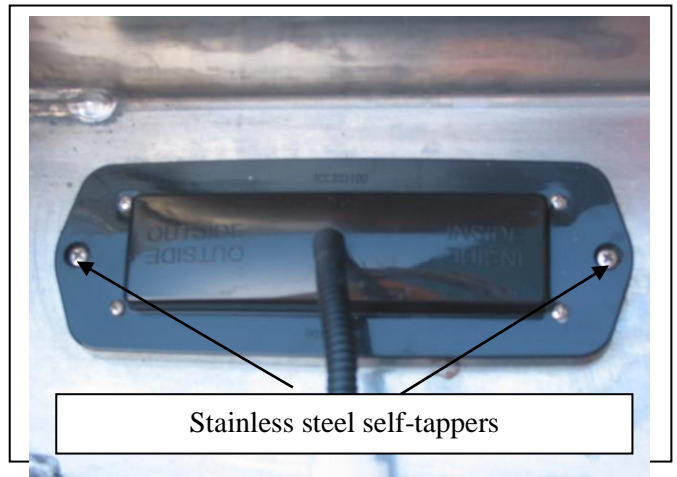
Figure 3: Internal mount fitted to vehicle



Figure 4: Cut out in plastic bumper.
Rear of driver's side shown

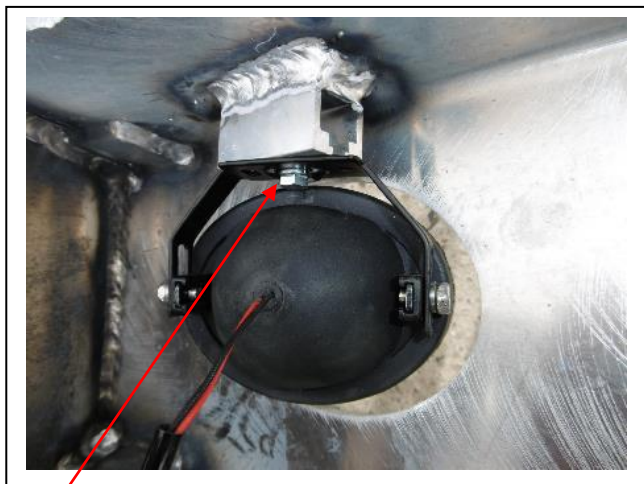


Figure 5: External mounts fitted with bar removed
for photo



Stainless steel self-tappers

Figure 6



M6 bolt

Figure 7



Figure 8: Clip lock trim



East Coast Bullbars (ECB Pty Ltd)

Tel: 07 3897 5700

Fax: 07 3283 1168

ecb@ecb.com.au www.ecb.com.au

WORLD'S BEST
ALLOY BULLBARS

29 Snook St
Clontarf QLD 4019
Australia

Po Box 122
Margate QLD 4019
Australia



Figure 9: Cut end to match channel end



Figure 10: Clip lock beside tube gussets



Figure 11: 3mm clip lock



Figure 12: Front view



Figure 13: Side view



**WORLD'S BEST
ALLOY BULLBARS**

East Coast Bullbars (ECB Pty Ltd)

Tel: 07 3897 5700

Fax: 07 3283 1168

ecb@ecb.com.au www.ecb.com.au

29 Snook St
Clontarf QLD 4019
Australia

Po Box 122
Margate QLD 4019
Australia

We value your comments

Dear Fitter,

ECB would like to know how you went with the installation of this product. We value your comment and may need to contact you to clarify some details so please complete your contact details clearly.

We would appreciate if you could complete as many of the following details as possible.

Your Name:	Your contact No.
Product Part No.	Product Invoice No.
Product Description:	Make, model, and year of vehicle:
Product Work Order No.	Company your from/Company product purchased from:

Date of fitment: ____/____/____

Was the fitting hardware supplied complete?

Yes

No

If no what was not supplied

Did the installation go well?

Yes

No

Please provide comments

Please draw diagrams if you need to.

Post to
Reply Paid 122
PO Box 122
Margate QLD 4019

Fax to
(07) 3283 1168



WORLD'S BEST
ALLOY BULLBARS

East Coast Bullbars (ECB Pty Ltd)

Tel: 07 3897 5700

Fax: 07 3283 1168

ecb@ecb.com.au www.ecb.com.au

29 Snook St
Clontarf QLD 4019
Australia

Po Box 122
Margate QLD 4019
Australia

DESPATCH CHECKLIST BT30SY

ICZBKCT30



Work Order #	
Finish:	
Transport:	
Due Date:	

- 1 – Pair internal steel mounts.
- 1 – Pair external steel mounts.
- 1 – Bolt kit.
- 1 – ECB LED Indicator / Park light kit.
- 1 – Fog light kit.
- 2 – Fog light trims.
- 1 – 2500mm length 6mm black clip lock.
- 2 – 300mm lengths 3mm black clip lock.
- 1 – Pair ECB trimmed overrides – **Fitted to Bar**
- 3 – 6mm air scoops – **Fitted to Bar – Logo at bottom**
- 3 – 3mm air scoops – **Fitted to Bar**

**See other side of
this page for
photos of all
mounts**



Is this product “the best it can be” Yes _____ / _____
Wrapper's initials / Checker initials

If **NO** fix before continuing

All parts checked and completed by:

Nut and bolts: _____ Date __/__/__

Order control: _____ Date __/__/__

Final wrap check: _____ Date __/__/__



East Coast Bullbars (ECB Pty Ltd)

Tel: 07 3897 5700

Fax: 07 3283 1168

ecb@ecb.com.au www.ecb.com.au

29 Snook St
Clontarf QLD 4019
Australia

Po Box 122
Margate QLD 4019
Australia

WORLD'S BEST
ALLOY BULLBARS

